

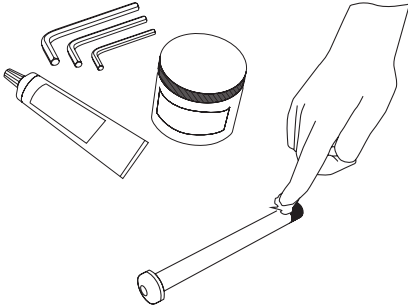
WHEEL INSTALLATION GUIDE



To install a thru-axle wheel, align the rotor with the brake caliper, slide the wheel into the dropouts, and thread the thru-axle through the hub and frame/fork. Tighten the axle with a hex wrench until secure.

FULL BREAKDOWN:

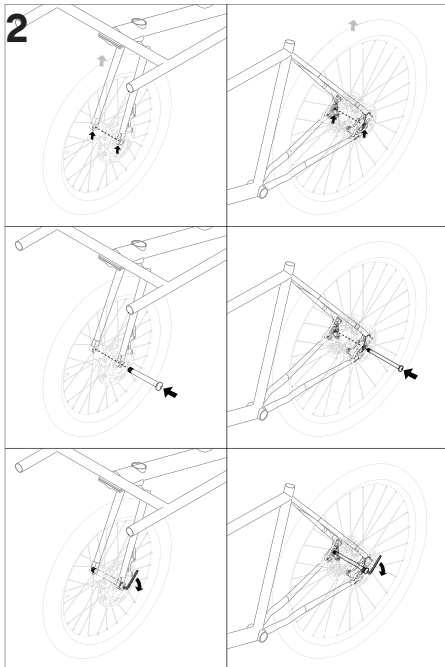
1



PREPARATION:

- **Gather tools:** you'll need the appropriate size hex key and assembly grease.
- **Grease the threads:** Apply a small amount of grease to the threads of the thru-axle for smooth installation and removal.

2



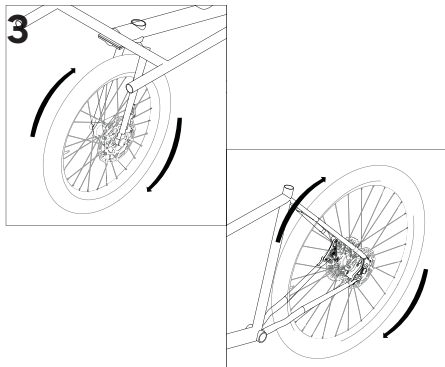
INSTALLATION:

- **Align the wheel:** Carefully position the wheel between the dropouts, ensuring the disc rotor aligns with the brake calliper.

NB - Chain Engagement

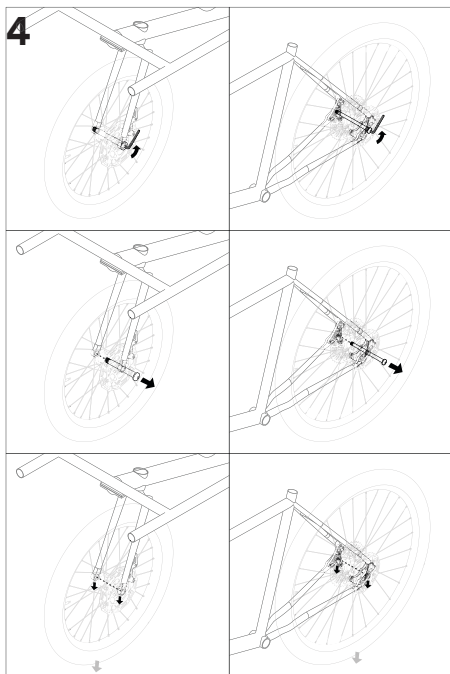
Make sure the chain engages the cog.

- **Insert the thru-axle:** Slide the thru-axle through the hub and dropout, pushing it all the way through.
- **Secure the axle:** For hex wrench axles, tighten the axle clockwise with the appropriate hex key



FINAL CHECK:

- **Confirm tightness:** Ensure the thru-axle is securely tightened and won't loosen during riding.
- **Check for proper rotor alignment:** Make sure the disc rotor is properly seated within the brake calliper.
- **Test shifting (if applicable):** If you reinstalled a rear wheel, test the shifting to ensure proper function.



REMOVAL:

- **Loosen the axle:** Turn the lever counter clockwise or loosen the hex wrench to unthread the axle.
- **Remove the axle:** Slide the thru-axle out of the dropout and hub.
- **Remove the wheel:** Carefully remove the wheel from the dropouts.

NB

Ensure the disc rotor doesn't interfere.